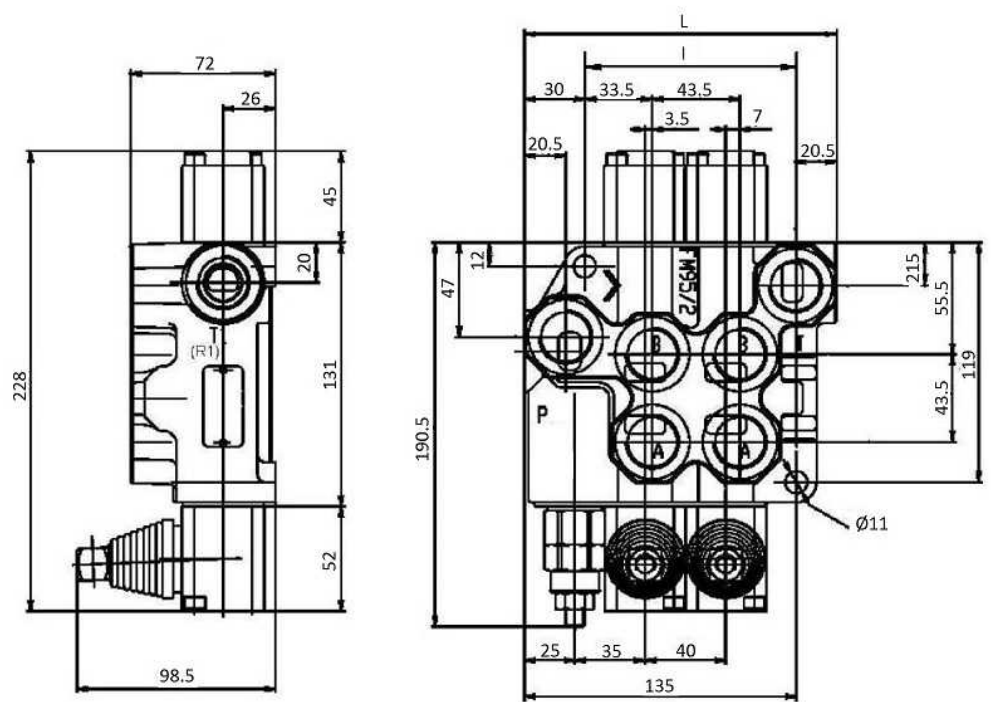
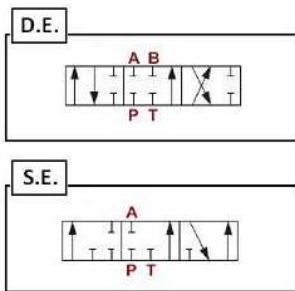


# FM85+relief valve. Manual operator, return to center by spring



- Nominal Flow** 90 l/min
- Max Flow** 100 l/min
- Nominal Pressure** 250 bar
- Max Working Pressure** 320 bar
- Max Tank-Line Pressure** 80 bar
- Check Valve**
  - 100 to 250 bar
  - Standard: 140 bar
- A - B** 3/4"

Part n°	R1	Type	Max. flow (l/min)	Max. Press. (bar)	Levers	I	L
FM85/1 3/4 1P D.E.	3/4" BSP	D.E	100	320	1	65	115
FM85/1 3/4 1P S.E.	3/4" BSP	S.E	100	320	1	65	115
FM85/2 3/4 2P DD	3/4" BSP	DE - DE	100	320	2	105	155
FM85/2 3/4 2P DS	3/4" BSP	DE - SE	100	320	2	105	155
FM85/3 3/4 3P DDD	3/4" BSP	DE - DE - DE	100	320	3	145	195
FM85/3 3/4 3P DDS	3/4" BSP	DE - DE - SE	100	320	3	145	195

FM85= BM100