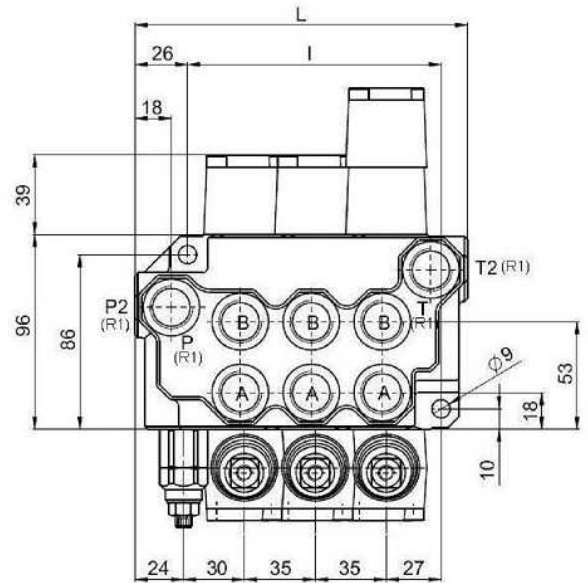
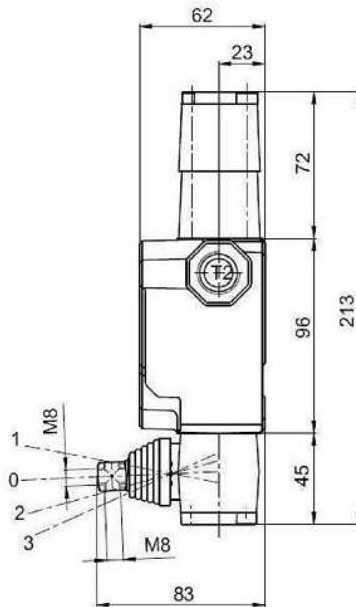
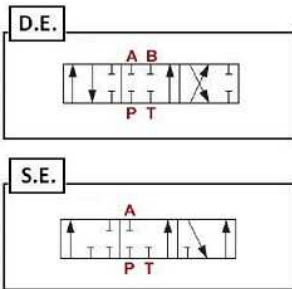


FM55+relief valve. Manual operator, return to center by spring



- Nominal Flow** 50 l/min
- Max Flow** 70 l/min
- Nominal Pressure** 280 bar
- Max Working Pressure** 300 bar
- Max Tank-Line Pressure** 80 bar
- pressure relief valve range**
 - 100 to 250 bar
 - Standard: 140 bar
- A-B** 1/2"

Part n°	R1	Type	Max. flow (l/min)	Max. Press. (bar)	Levers	I	L
FM55/1 1/2 1P DE	1/2" BSP	D.E.	70	300	1	55	94
FM55/1 1/2 1P SE	1/2" BSP	S.E.	70	300	1	55	94
FM55/2 1/2 2P DD	1/2" BSP	DE - DE	70	300	2	90	129
FM55/2 1/2 2P DS	1/2" BSP	DE - SE	70	300	2	90	129
FM55/3 1/2 3P DDD	1/2" BSP	DE - DE - DE	70	300	3	125	164
FM55/3 1/2 3P DDS	1/2" BSP	DE - DE - SE	70	300	3	125	164
FM55/3 1/2 3P DSS	1/2" BSP	DE - SE - SE	70	300	3	125	164
FM55/4 1/2 4P DDDD	1/2" BSP	DE - DE - DE - DE	70	300	4	160	199
FM55/4 1/2 4P DDDS	1/2" BSP	DE - DE - DE - SE	70	300	4	160	199
FM55/4 1/2 4P DDSS	1/2" BSP	DE - DE - SE - SE	70	300	4	160	199
FM55/5 1/2 5P DDDDD	1/2" BSP	DE - DE - DE - DE - DE	70	300	5	195	234
FM55/6 1/2 6P DDDDDD	1/2" BSP	DE - DE - DE - DE - DE - DE	70	300	6	230	269

FM55= BM50