

S5-50/90, S6-65/66/70/75/80/90, 6S-800/1000/1005/1200
TD/TO (Volvo ZTO 1006), 6AS 800/1000TO

Frontal - Neumático (1: 1,30)

Rear - Pneumatic



Descripción Description

Toma de fuerza reforzada de dos piñones, relación interna , para montar bombas ISO 4 taladros. Accionamiento neumático, montaje sobre el registro frontal de 4 taladros de la caja de cambios. Indicador de funcionamiento opcional.

Heavy Duty Power Take-off two gears, internal ratio 1:1,30, to connect ISO 4 bolts pumps. Pneumatic shifting, mounting on rear 4 bolts-window of the Gearbox. Optional: Passing contact switch.

Datos Principales Main Data

Par nominal Torque (Nm)	Continuo Continuous	350
	Intermitente Intermittent	490
Potencia (1000 r.p.m.) Power (HP) 1000 r.p.m		52 C.V // 39 kW
Lado de montaje Mounting position		Posterior Rear
Sentido de giro de la bomba Pump rotation		Derecho ClockWise
Peso Weight (Kg)		11
Relación motor - Toma de Fuerza Engine to PTO ratio	ANEXO ATTACHMENT	

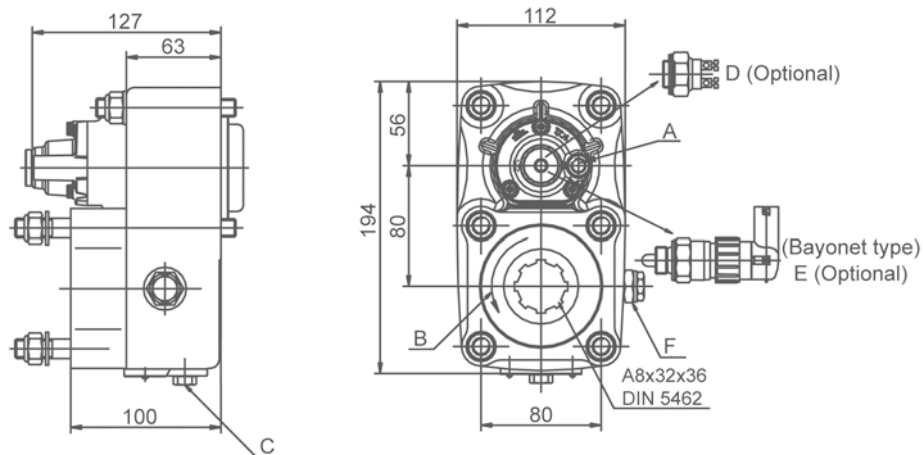
Códigos y Combinaciones Part Numbers and Combinations

Tipos de salida Output types		Plato Flange	Bomba Pump (DIN 5462)
Accionamiento neumático Pneumatic shifting		1015802	1015803

S5-50/90, S6-65/66/70/75/80/90, 6S-800/1000/1005/1200
TD/TO (Volvo ZTO 1006), 6AS 800/1000TO

Frontal - Neumático (1: 1,30)

Rear - Pneumatic



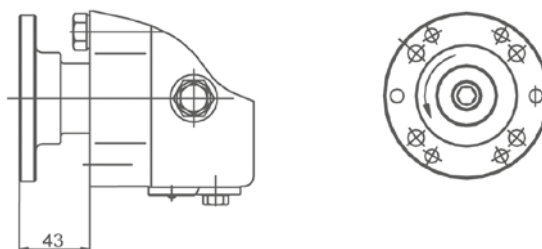
Notas Notes

Kit Lubricación Optional 900199		Lubrication Kit Optional 900199	
A	Toma de aire, rosca 1/8" GAS	A	Air connection, thread 1/8" BSP
B	Sentido de giro	B	Rotation
C	Conexión latiguillo de salida	C	Output oil pipe connection
D	Interruptor neumático. (100070018)	D	Pressure switch. P/N 100070018
E	Interruptor de contacto. (9024999)	E	Passing contact switch. P/N 9024999
F	Conexión latiguillo de entrada	F	Input oil pipe connection

Tipos de Salida Output Types

Plato / Flange

SAE:	1100
	1300
	1400
DIN:	90
	100



S5-50/90, S6-65/66/70/75/80/90, 6S-800/1000/1005/1200
TD/TO (Volvo ZTO 1006), 6AS 800/1000TO

Frontal - Neumático (1: 1,30)

Rear - Pneumatic

CAJA GEARBOX		RELACIÓN RATIO	
S5-50	/ 5.30	1: 0,847	
	/ 5.50	1: 0,798	
	/ 6.20	1: 0,707	
	/ 6.61	1: 0,663	
	/ 6.61+GV80	Larga High	1: 0,828
	/ 5.30	Normal	1: 0,663
	/ 8.02	1: 0,548	
	/ 8.02+GV80/6.20	Larga High	1: 0,707
		Normal	1: 0,548
S5-90GP	/ GPA	1: 1,155	
S6-65	/ 6.37	1: 0,846	
	/ 6.70	1: 0,806	
	/ 7.0+GV70/7.67	Larga High	1: 0,592
		Normal	1: 0,474
	/ 7.40	1: 0,729	
	/ 7.52	1: 0,720	
	/ 9.00	1: 0,600	
	/ 7.97+GV80/6.70	Larga High	1: 0,805
		Normal	1: 0,682
	/ 9.00+GV80/6.70	Larga High	1: 0,805
		Normal	1: 0,601
	/ 9.00+GV80/7.52	Larga High	1: 0,720
	Normal	1: 0,601	
S6-66	/ 7.36-1.0	1: 0,678	
	/ 9.06-1.0	1: 0,541	
S6-70	/ 6.8	1: 0,668	
	/ 6.8+GV70/5.71	Larga High	1: 0,795
		Normal	1: 0,668
	/ 7.36	1: 0,619	
	/ 7.92	1: 0,572	
	/ 9.03	1: 0,502	
	/ 9.59	1: 0,474	
S6-75	/ 6.70+GV80/7.52	Normal	1: 0,805
		Corta Low	1: 0,720
S6-80	/ 5.03	1: 1,012	
	/ 5.66	1: 0,964	
S6-80	/ 5.66+GV80/7.52	Larga High	1: 0,958
		Normal	1: 0,721
	/ 6.10	1: 0, 893	
	/ 6.7	1: 0, 806	
	/ 6.7+GV80/5.30	Larga High	1: 1,022
		Normal	1: 0,805
	/ 6.90	1: 0,668	
	/ 7.35	1: 0,716	
	/ 7.41	1: 0,731	
	/ 7.53	1: 0,720	
	/ 7.67	1: 0,698	
	/ 7.67+GV80/6.7	Larga High	1: 0,807
		Normal	1: 0,704
	/ 7.90	1: 0,681	
	/ 9.00	1: 0,600	
	/ 9.00+GV80/5.30	Larga High	1: 1,022
		Normal	1: 0,601
	/ 9.00+GV80/7.48	Larga High	1: 0,731
		Normal	1: 0,601
	/ 9.00+GV80/7.52	Larga High	1: 0,720
		Normal	1: 0,601
	S6-90	/5.67	1: 0,974
/5.74		1: 0,964	
/6.37		1: 0,964	
/6.98		1: 0,794	
/7.03		1: 0,783	
/ 7.03+GV90/5.67		Larga High	1: 0,973
		Normal	1: 0,783
/ 7.03+GV90/5.74		Larga High	1: 0,954
		Normal	1: 0,777
/7.40		1: 0,746	
/ 9.01		1: 0,610	
/ 9.01+GV90/7.40		Larga High	1: 0,744
	Normal	1: 0,612	
6S800TO/6.58-0.78(Volvo ZTO 1006)	1: 0,689		
6AS 800 TO/6.58-0.78	1: 0,689		
6AS1000TO/6.75-0.78	1: 0,689		
6S1000/1005 TO/ 6.75 -0.78	1: 0,689		
6S1200TD/ 7.72 -1.00	1: 0,702		
6S1200TO/6.75 - 0.83	1: 0,806		